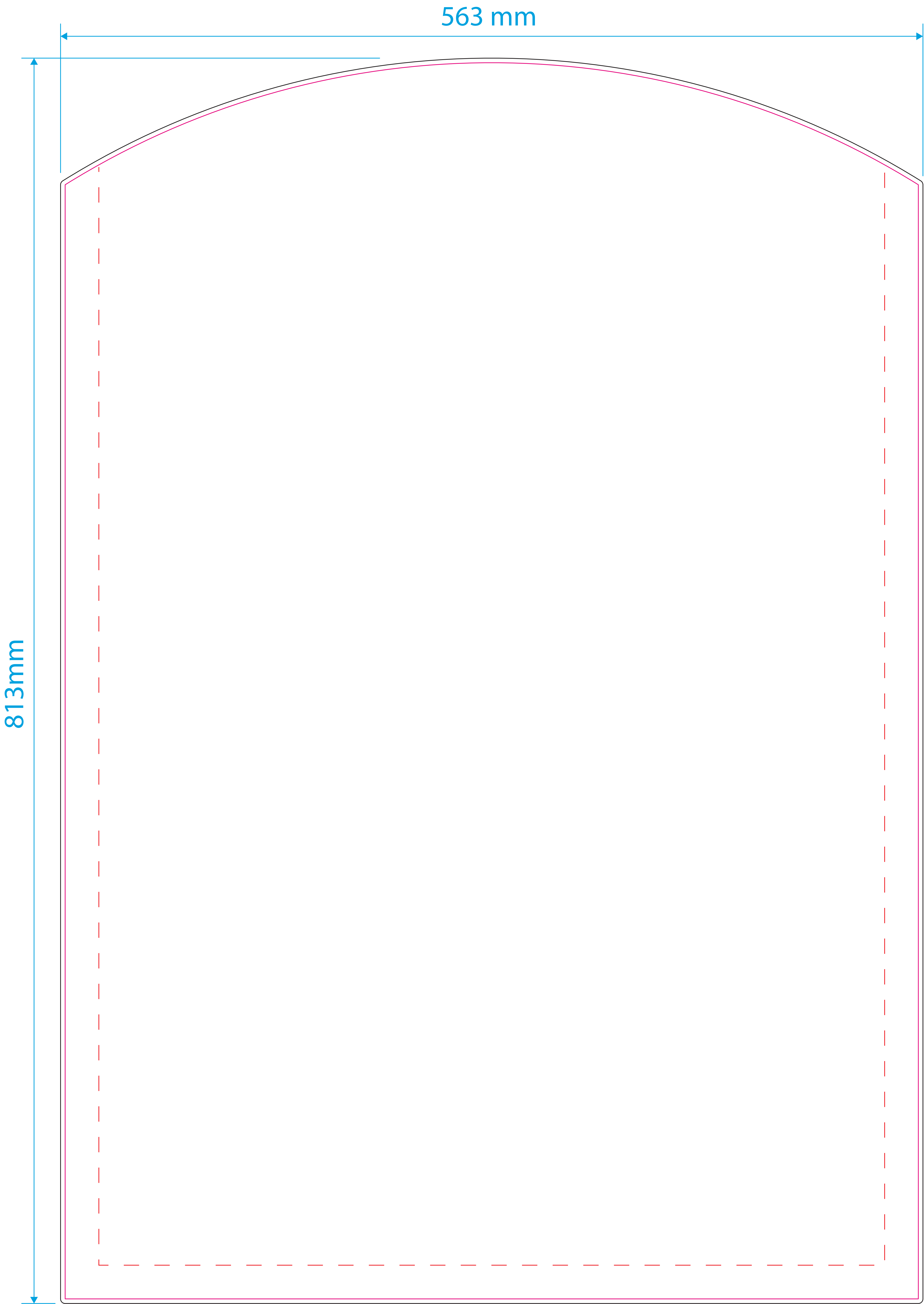


# Chalk A-Board by Woodworkz®

## Medium Premium Reversible

## Artwork Template

Artwork guidelines - PLEASE READ
• Must be supplied in <b>CMYK</b> .
• <b>Embed</b> all images.
• All fonts must be converted to <b>outlines</b> .
• Resolution must be <b>300dpi</b> .
• Supply artwork as high resolution <b>PDF</b> or <b>Illustrator</b> file.
• Convert all spot colours to process <b>CMYK</b> for <b>digital print</b> . (Pantone matching cannot be guaranteed)
• Set artwork at <b>100%</b> scale.



**ONLY** PLACE ARTWORK WHERE NECESSARY & LEAVE CHALKING AREA FREE FROM ARTWORK.

Template guidelines - PLEASE READ
— The <b>Black</b> keyline = Finished cut size of the product before assembly.
— The <b>Pink</b> keyline = Artwork limit, your background must extend to this line.
· · · · The <b>Red</b> dashed keyline = <b>Safe Area</b> - Its advised that you keep all important information within this area. <b>Delete or hide this keyline after use.</b>